

**Author****Internet connection without GPRS for SX1**

instructions



Gwin

Issued on: 17/04/2005  
Average rating: 3.6 (rated 10x)





**Do you want to connect to the Internet and use services that require a GPRS connection almost for free? If you have a fixed connection, this guide is for you and will definitely save you some money.**

**What will we need:**

**SX1**  
**USB cable or BT or iRDA**  
**mRouter installed and working**

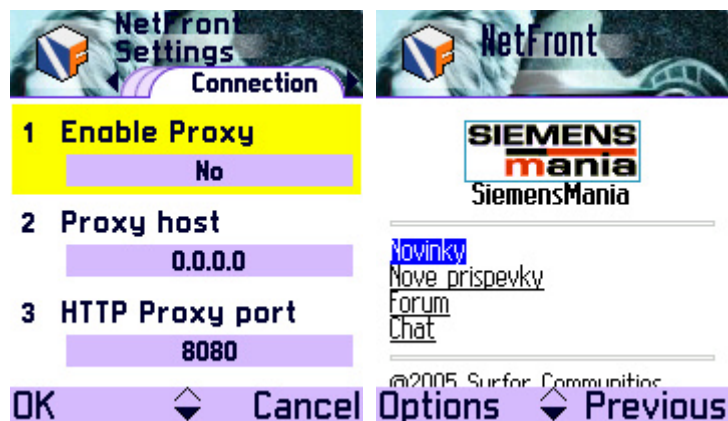
Everything depends on the access point settings:

1. Create a new access point in Setup => Settings => Connection => Access Point.
2. Name: **mRouter** (you can name the access point as you like)
3. Data carrier: **GPRS 4. Do not change**
- the access point name, username and password
5. Require password: **no**
6. Authentication: **secure**
7. Gateway IP address: **0.0.0.0** – this is the most important setting of the whole connection, if there is something else here, the connection will not work.
8. Done!

			
<b>Connection name</b> <input type="text" value="mRouter"/>		<b>User name</b> <input type="text" value="None"/>	
<b>Data bearer</b> <input type="text" value="GPRS"/>		<b>Prompt password</b> <input type="text" value="No"/>	
<b>Access point name</b> <input type="text" value="None"/>		<b>Password</b> <input type="text" value="****"/>	
Options ▴ ▾ Back		Options ▴ ▾ Back	
			
<b>Password</b> <input type="text" value="****"/>		<input type="radio"/> EuroTel ISP GPRS <input type="radio"/> Internet GPRS <input type="radio"/> MMS <input checked="" type="radio"/> <b>mRouter</b>	
<b>Authentication</b> <input type="text" value="Secure"/>		<input type="radio"/> W@P (GPRS) <input type="radio"/> W@P (GSM)	
<b>Gateway IP address</b> <input type="text" value="0.0.0.0"/>			
Options ▴ ▾ Back		Options ▴ ▾ Back	

Now, when you want to connect via USB/BT/iRDA, always choose this access point - mRouter. Don't forget to turn on your PC.

If you want to connect via BT or iRDA, you must have these devices configured correctly.



**Advantages** : You don't pay for GPRS

**Disadvantages** : You have to have your PC on, you pay for the internet. If you don't have a fixed connection, you'll be fine.  
Tested on applications: Netfront, Tibia and Agile Messenger.

---

No one may copy graphics, texts or anything else from these pages without the permission of the authors. All information published on this site is intended for educational purposes only and may not be used for commercial use or in violation of laws. The authors are not responsible for inappropriate use of data from these pages.

©2003-2004 Radim Zeman | ©2004 Roman Gregor